

Renewable Energy and Electromobility for Smart Urban Environments

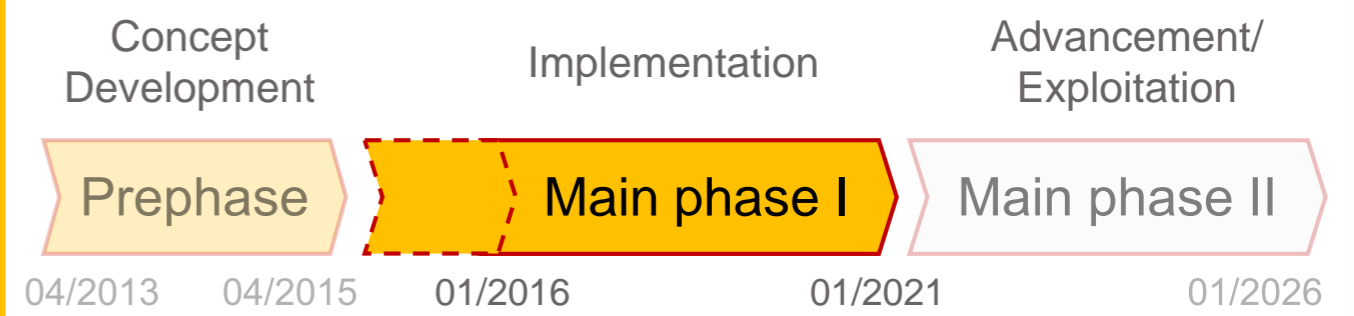


The proliferation of **electric vehicles** provides a unique opportunity to develop **integrated energy and transport systems**. The Mobility2Grid Research Campus, situated within the EUREF quarter in Berlin-Schöneberg, will assess and implement innovative solutions to ensure an affordable and secure supply of **electricity, heat and transport** fully based on **renewable energy**.

Research Topics

- Integrating commercial and private **electric road vehicles** into **decentralised energy systems**
- Creating a **reference quarter** to showcase synergies between electromobility and power grids as well as heat distribution networks

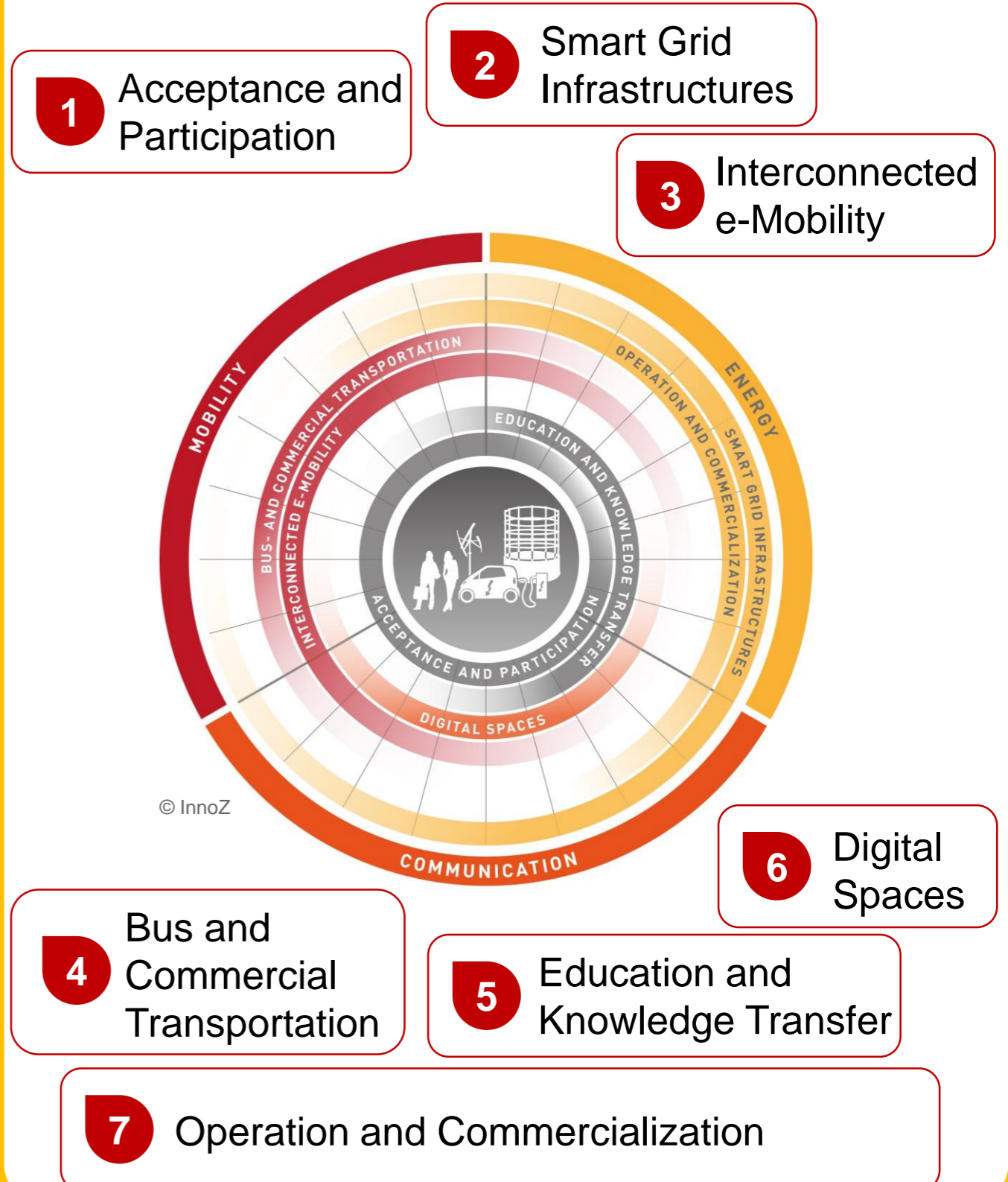
Mobility2Grid Timeline



Main Goals

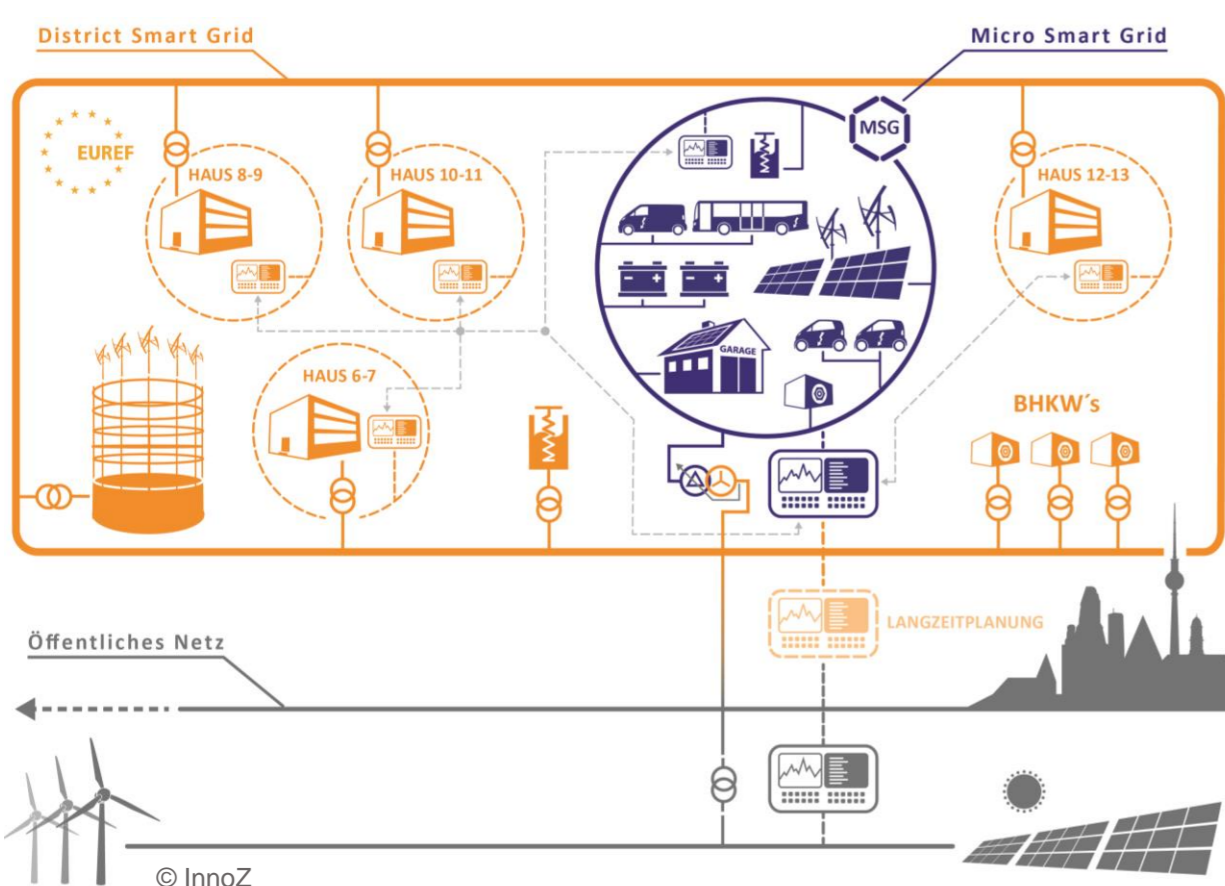
- Research and development of new technology options
- Analysis and evaluation of social acceptability and political environment
- Economic uses of research results
- Development of new education and training formats

Topic Fields



A Real Life Test Bench: M2G Micro Smart Grid

Planned expansion of the Micro Smart Grid 2020:



The Research Campus Mobility2Grid is coordinated by the **Mobility2Grid e.V.** association.

Further information: www.mobility2grid.de

Partners and Members of Mobility2Grid e.V.:



Chairman: Prof. Dr.-Ing. Dietmar Göhlich and Carl Tille

Manager: Franziska Kaiser

[Status: 11-2016]